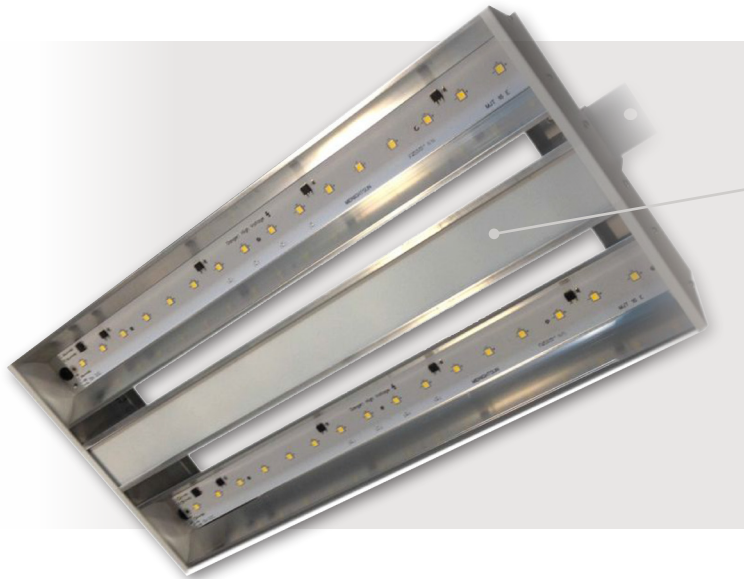




## Megaledbay V3 Supreme

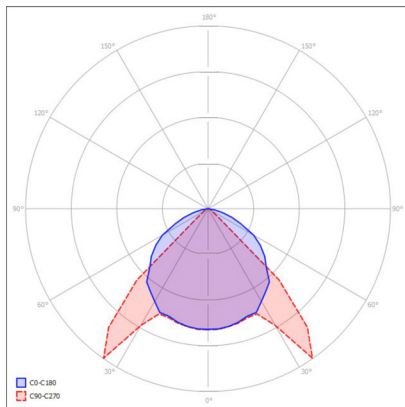
Effect Lighting

High efficiency ballast housed in this chamber.  
Emergency Lithium ion kit can also be mounted in here.



**Rear view of 507 model**  
can be suspended or attached to  
P2000 trunking or surface fixed.  
590 x 590 infill plate also available.

### Photometry

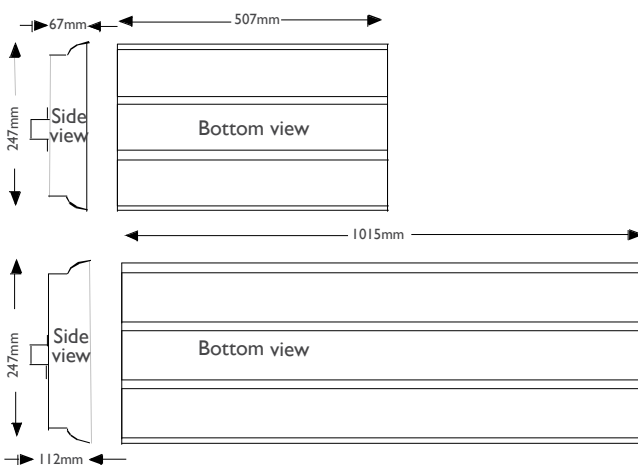


Supreme polar  
curve curve

### Specifications

Body construction	Extruded, chemically polished aluminium reflector channel. End caps mild steel powder coated – (stainless steel 304 optional). Lens - clear acrylic – opal diffuser also available
IP Rating	Standard is IP 44 – IP 65 on request
Control gear	Helvar or equivalent high efficiency ballast – integral.
507 model Lumens	13696 lumens – at source at 50 degrees operating T.
507 model wattage	100W – total circuit load
1015 model lumens	27392 lumens – at source at 50 degrees C operating T
1015 model wattage	200W – total circuit load.
Colour T	3000K or 4000K or 5000K
CRI	Always better than 82 – above 90 on request.
Operating T	-20 to +46 C maximum.
Supply V	220 -240V
Installation Data	LDT/IES Files – Available
Dimmable?	Dali –Yes - on request I-10V –Yes – on request DMX –Yes – on request Triac –Yes – on request

### Dimensions



Lumen values are as measured at source - on the PCB - not exiting light fitting.  
Values are subject to change at any time and without notice.